

INDEX OF ACADEMIC INDICATORS

Our Mission

For each student, we will inspire a love for learning, empower the pursuit of personal aspirations, and nurture a desire to contribute to the world.

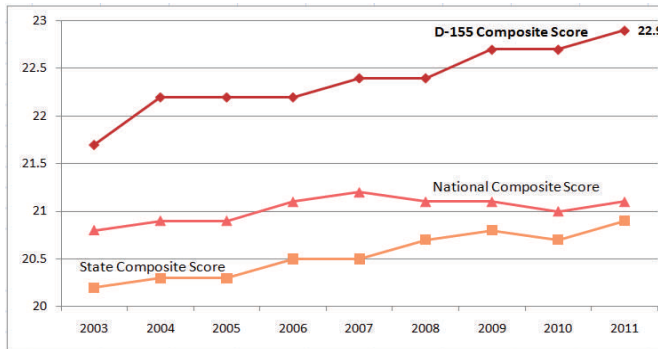
Our Core Values

We believe that...

- all people have intrinsic value.
- learning is essential to thrive in a changing world.
- human potential is unlimited; anything is possible.
- each person has contributions to make.
- relationships built on trust and shared values are essential for the passionate pursuit of a common purpose.

American College Test (ACT)

Graduating Class of	D-155 Composite Score	State Composite Score	National Composite Score
2003	21.7	20.2	20.8
2004	22.2	20.3	20.9
2005	22.2	20.3	20.9
2006	22.2	20.5	21.1
2007	22.4	20.5	21.2
2008	22.4	20.7	21.1
2009	22.7	20.8	21.1
2010	22.7	20.7	21.0
2011	22.9	20.9	21.1



Advanced Placement Exams (AP)

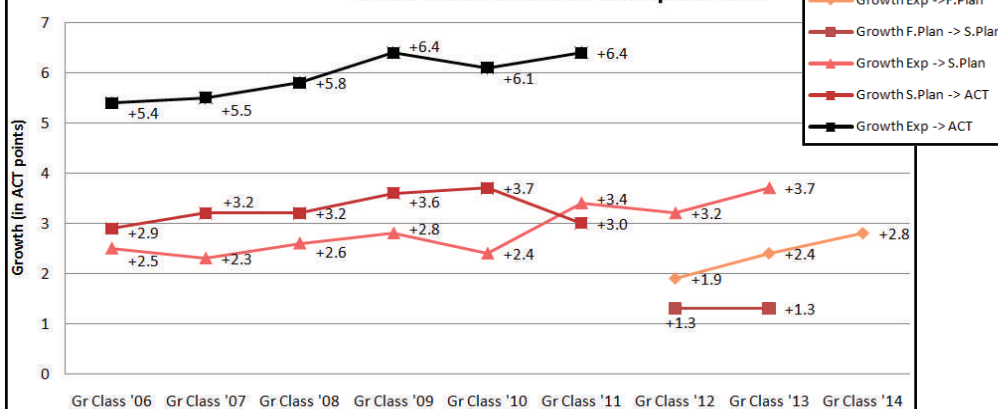
	2002-03	2003-04	2004-05	2005-06	2006-07	2007-08	2008-09	2009-10	2010-11
No. of Exams	692	963	1014	1151	1134	1075	1235	1312	1355
No. of Students	420	549	592	625	672	630	713	718	756
% of Honor Scores	78%	80%	74%	76%	79%	77%	78%	83%	85%

Advanced Placement Exams are scored on an ascending scale from 1 to 5. A score of 3 or higher is considered an honor grade.

EXPLORE to PLAN to ACT Growth

Students take the EXPLORE exam in eighth grade. The results from this assessment provide a baseline to measure achievement growth in high school. Students in grades nine and ten are administered the PLAN and students in grade eleven take the ACT. Each of these exams are aligned to similar college readiness standards, yet the level of difficulty increases as students proceed from EXPLORE to ACT. Growth based upon the performance of these exams is monitored after each exam. The data included in the chart and graph below reflects the achievement growth made by D-155 High School Graduating Classes ranging from 2006 to 2014. Highlighted areas reflect the largest gains in growth.

D155 EPAS Growth Comparisons



Growth

	Exp ->F.Plan	F.Plan -> S.Plan	Exp -> S.Plan	S.Plan -> ACT	Exp -> ACT
Gr Class '06			+2.5	+2.9	+5.4
Gr Class '07			+2.3	+3.2	+5.5
Gr Class '08			+2.6	+3.2	+5.8
Gr Class '09			+2.8	+3.6	+6.4
Gr Class '10			+2.4	+3.7	+6.1
Gr Class '11			+3.4	+3.0	+6.4
Gr Class '12	+1.9	+1.3	+3.2		
Gr Class '13	+2.4	+1.3	+3.7		
Gr Class '14	+2.8				